



No reproduction of this drawing is allowed without written permission of WEG Motores

EIXO  
 PADRÃO  
 OPCIONAL  
 ESPECIAL

Dimensões em polegada  
 Dimensions in inches

THIS IS AN UPDATED REVISION, THE PREVIOUS ONE MUST BE DISREGARDED.

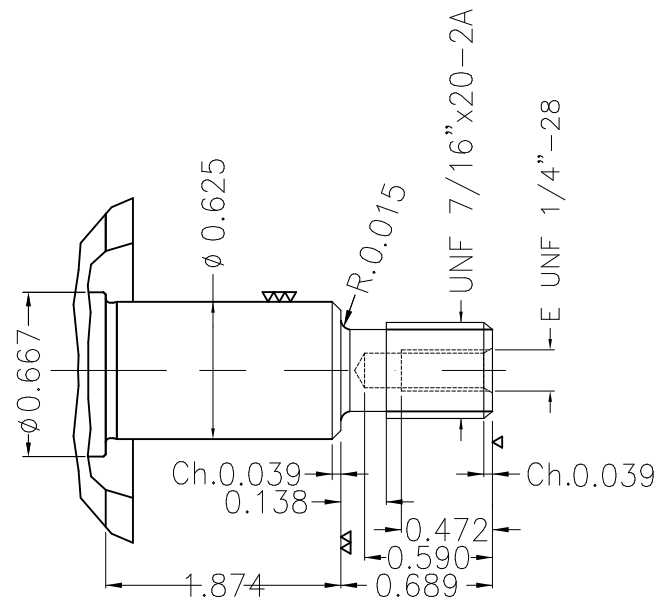
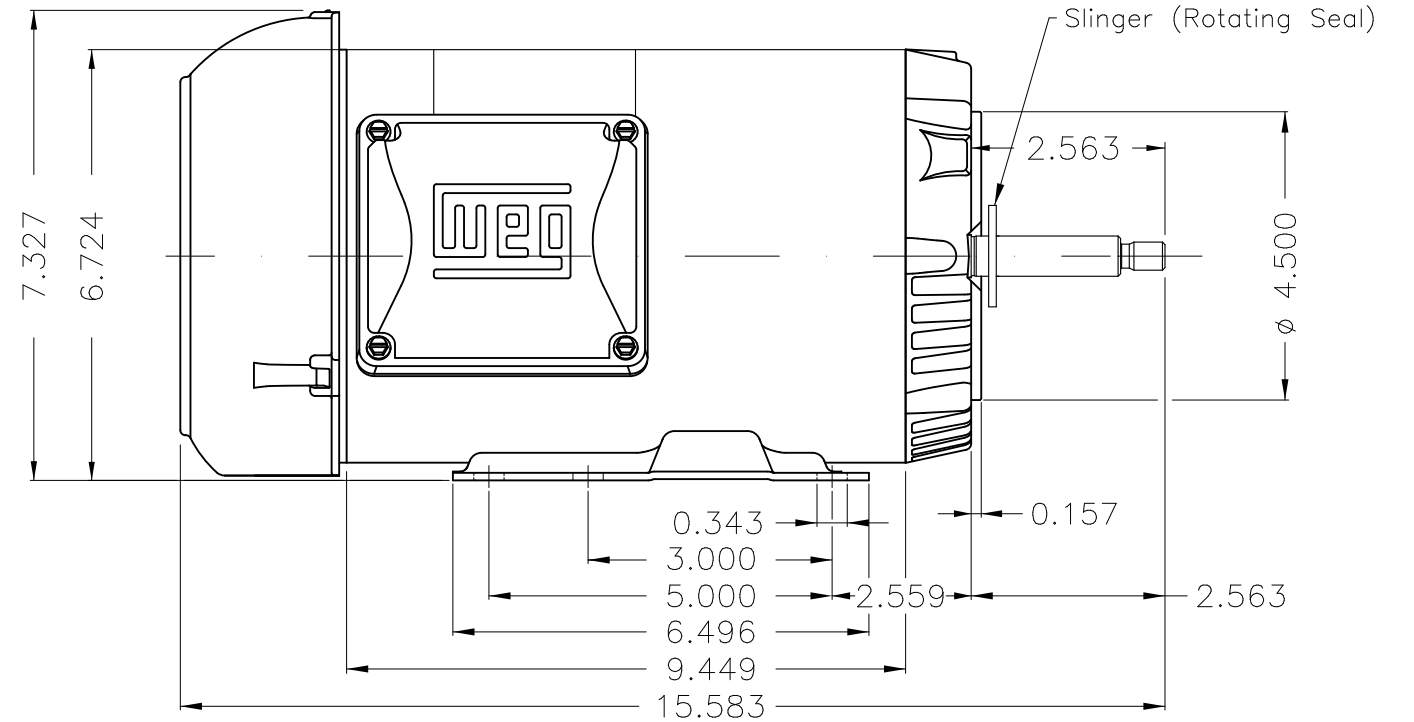
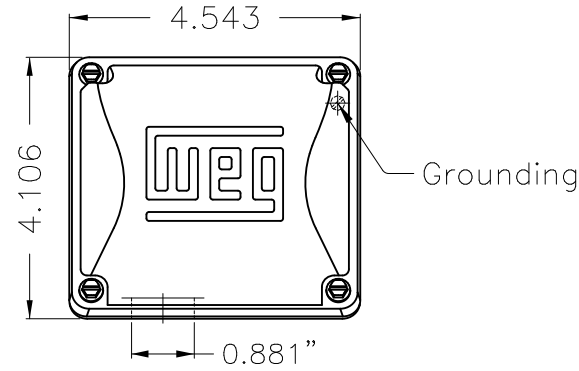
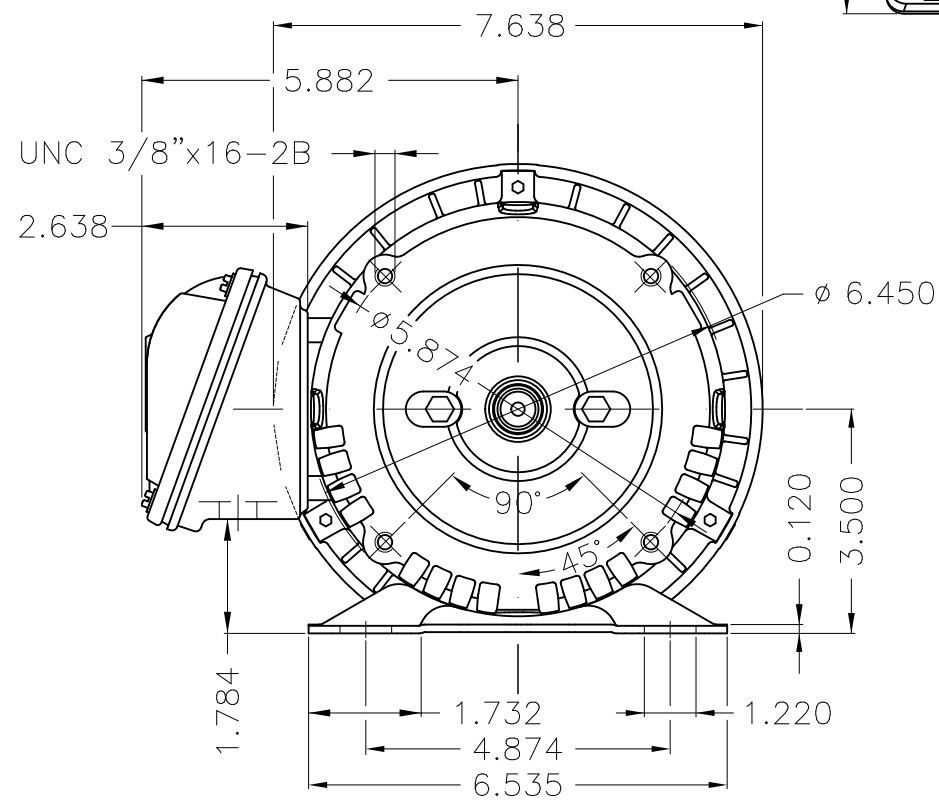
A

B

C

D

E



Color Munsell N 1 matte black  
 Painting plan 207N  
 Mounting F-1/B34R(D)

ECM	LOC	SUMMARY OF MODIFICATIONS	EXECUTED	CHECKED	RELEASED	DATE	VER
EXECUTED	USERADMIN	THREE PHASE MOTOR CLOSED ROLLED STEEL					
CHECKED		FRAME 56HJ IP55 TEFC					
RELEASED		JET PUMP   WEG code: 13522001					
REL DT	13.11.2020	WMO Jaragua do Sul	Product Engineering	SHEET	1 / 1		



3 HP 02 Poles 60Hz

**WEG****NEMA**  
**Premium**3PT9  
C US LISTED  
FOR SAFE AREA

Energy Verified

MADE IN MEXICO

**MAT: 13522001 CC029A****W01.TE0IC0X0X****MODEL 00336ET3EJP56J-S**  
**31AGO2020**For 60Hz: Class I, Zone 2, IIC  
Class I, Div.2, Gr. A,B,C,D - T3  
Div 2 Inverter Duty (SF1.00)  
CT 2:1/MT 1000:1

PH 3	FR	56HJ	HP(KW)	3.0(2.2)	Hz	60
V	230/460		RPM	3500		
A	7.02/3.51		DUTY CONT.			

SFA	8.07/4.04		CODE	K	DES	B	IP55			
SF	1.15	INS	CL	F	AT	80K	AMB	40°C	ENCL	TEFC
PF	0.91		NEMA NOM.EFF. 86.5%							

**ALT 1000 m.a.s.l. USABLE @ 208V 7.76A SF1.00****ALTERNATE RATING: 3.0HP 50Hz 190-220/380-415V SF1.15**  
**8.50-7.38/4.25-3.91A 2870RPM EFF 84.6% (IE2) IEC 60034-1**T1-BLU T2-WHT  
T3-ORG T4-YEL  
T5-BLK T6-GRY  
T7-PNK T8-RED  
T9-RED BRK

For safe area-inverter duty motor For 60Hz use on VPWM 1000:1 VT, 5:1 CT

**DE: 6203-2RS ODE: 6202-2RS MOBIL POLYREX EM**

WARNING: Motor must be grounded in accordance with local and national electrical codes to prevent serious electrical shocks. Disconnect power source before servicing unit.

AVERTISSEMENT: Le moteur doit être mis à la terre conformément aux codes électriques locaux et nationaux afin d'éviter tout choc électrique grave. Déconnectez l'alimentation avant l'entretien de la machine.

